

57 Islington Park Street, London

These are just a few brief notes on the history of the above address.

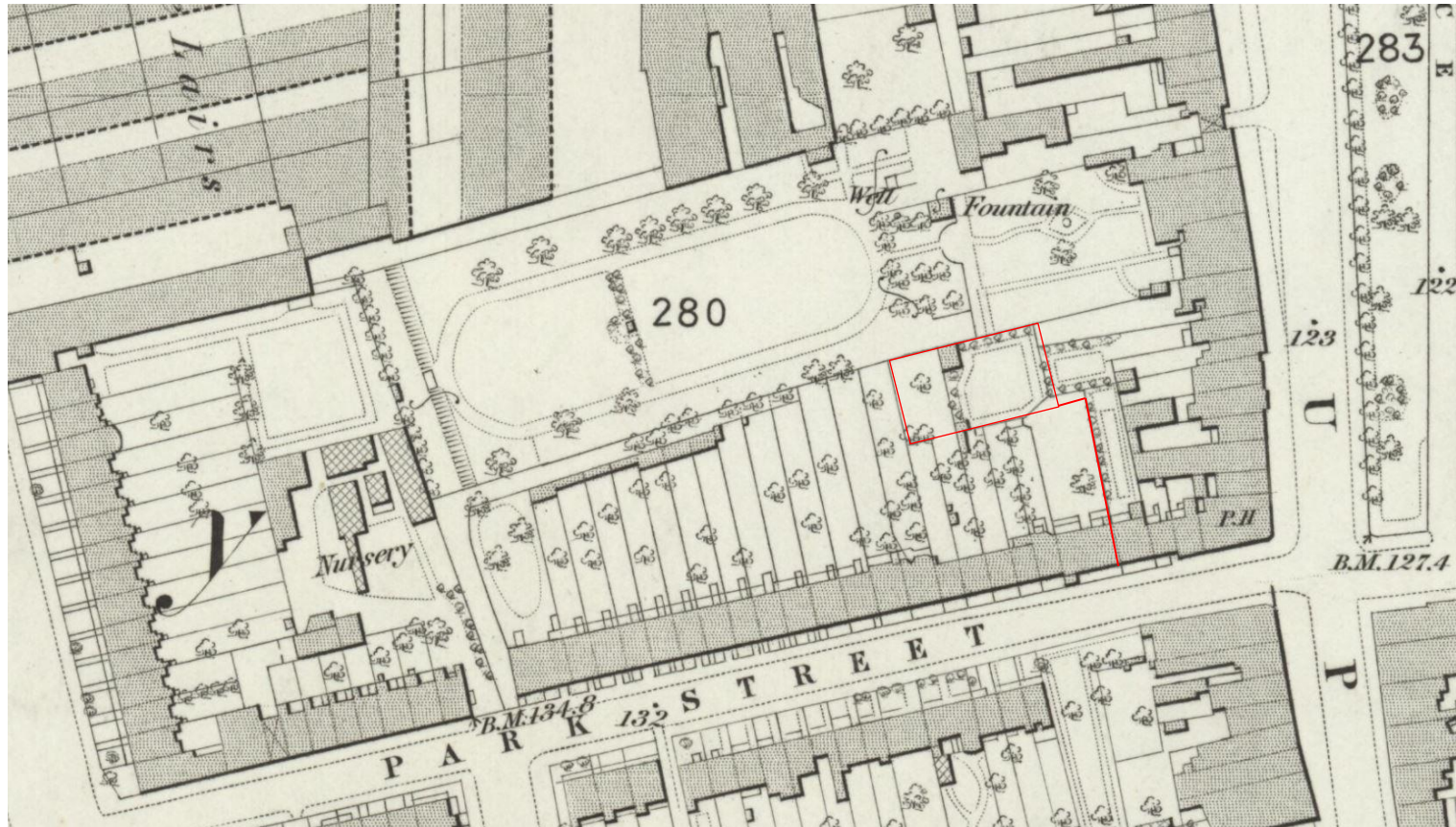


Fig 1. Map extract, surveyed in 1871 (ordnance Survey Office) and published 1877

This street plan (fig.1) shows the site prior to the meeting room/hall being built. The red outline shows the approximate position of the future hall and access corridor.



Fig 2. Map extract, revised in 1894 (ordnance Survey Office) and published 1896

The hall, shown on this map of 1894, was built in 1875 (according to information on www.british-history.ac.uk). Access was by way of a long covered corridor and then a door onto Park Street, number 57, or by the entrance on the west side of the building which was accessed by the mews which is now called Cobble Lane.

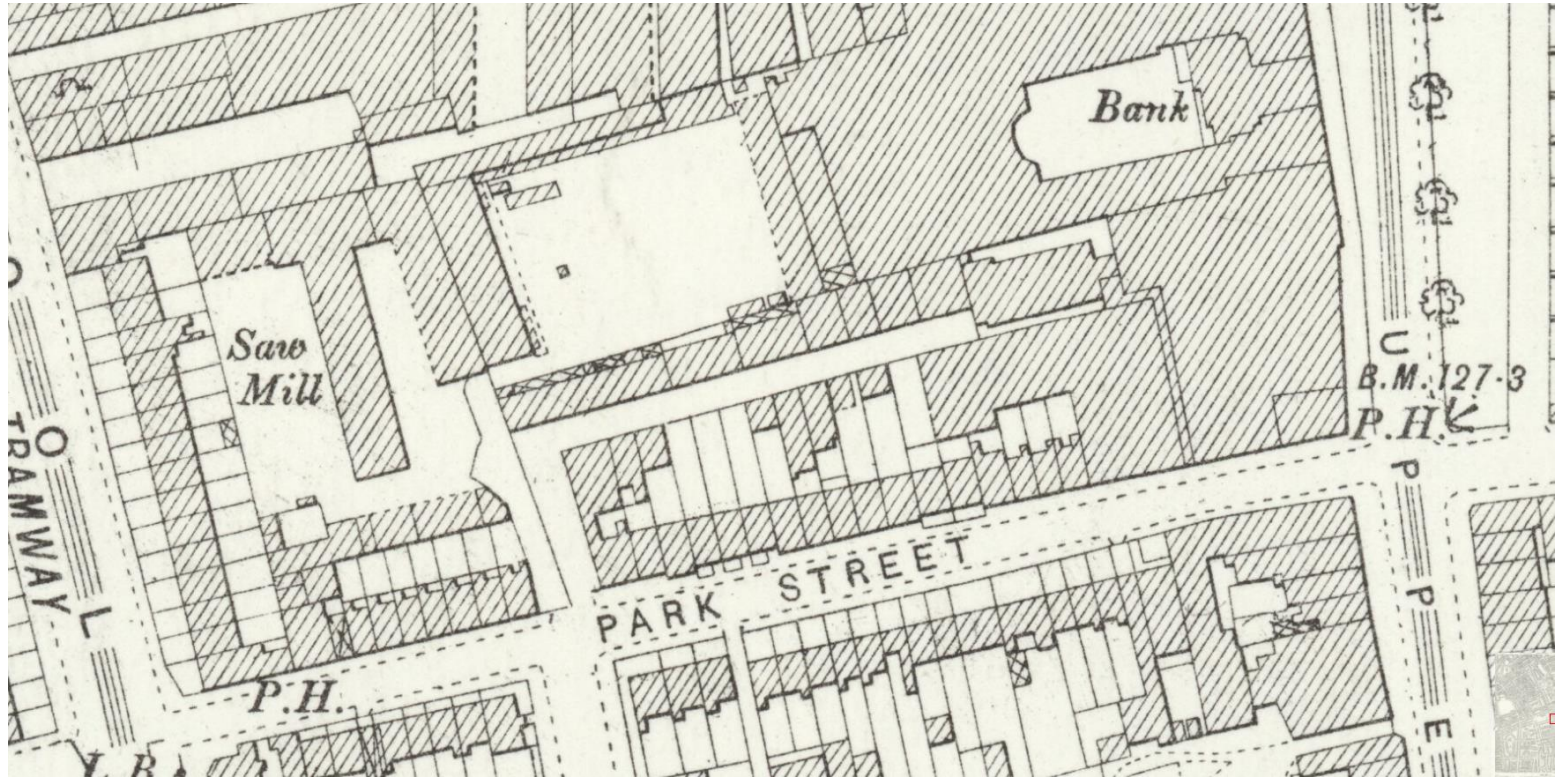


Fig 3. Map extract, revised in 1894 (ordnance Survey Office) and published 1897

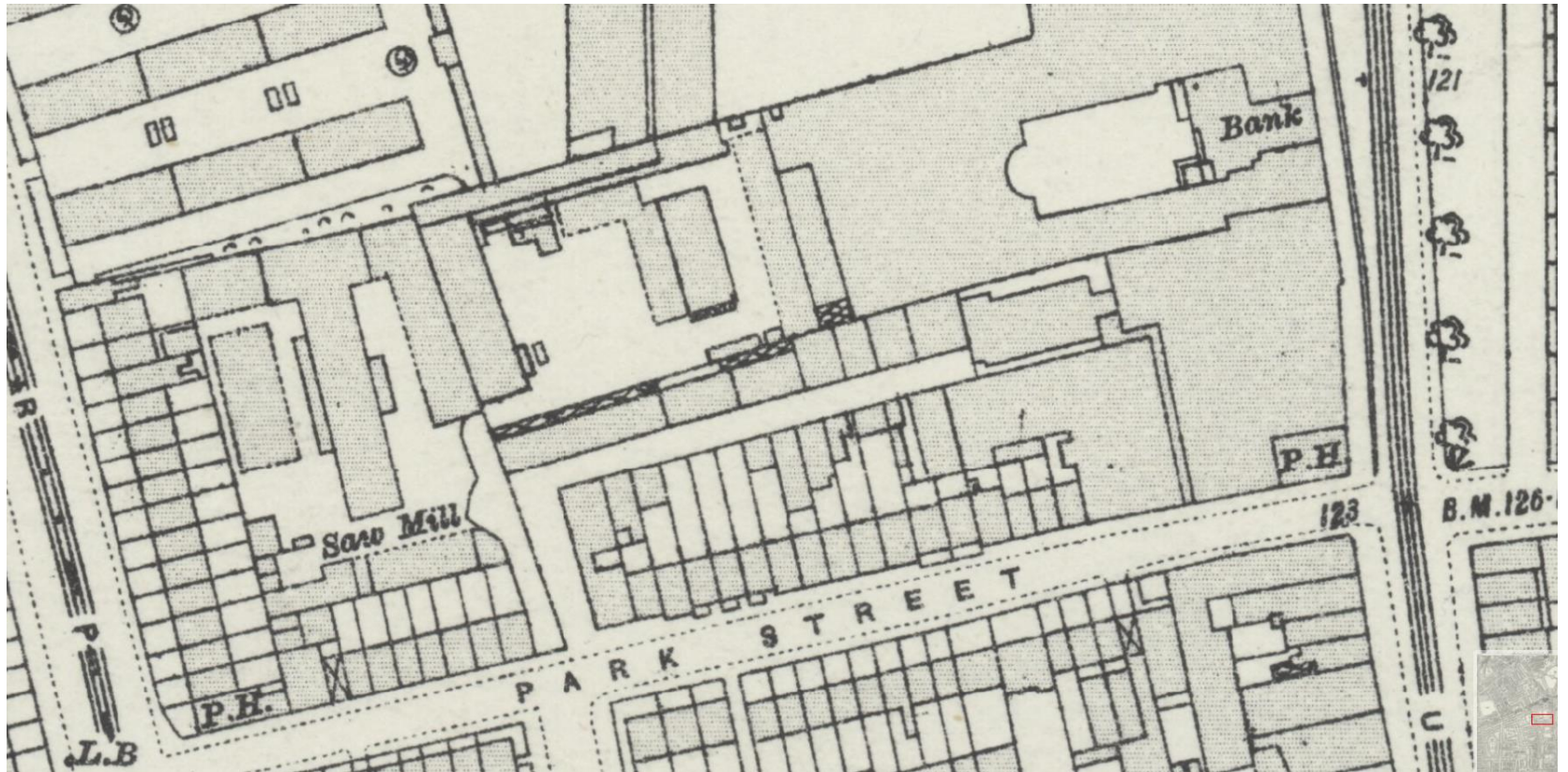


Fig 4. Map extract, revised in 1913 (ordnance Survey Office) and published 1934

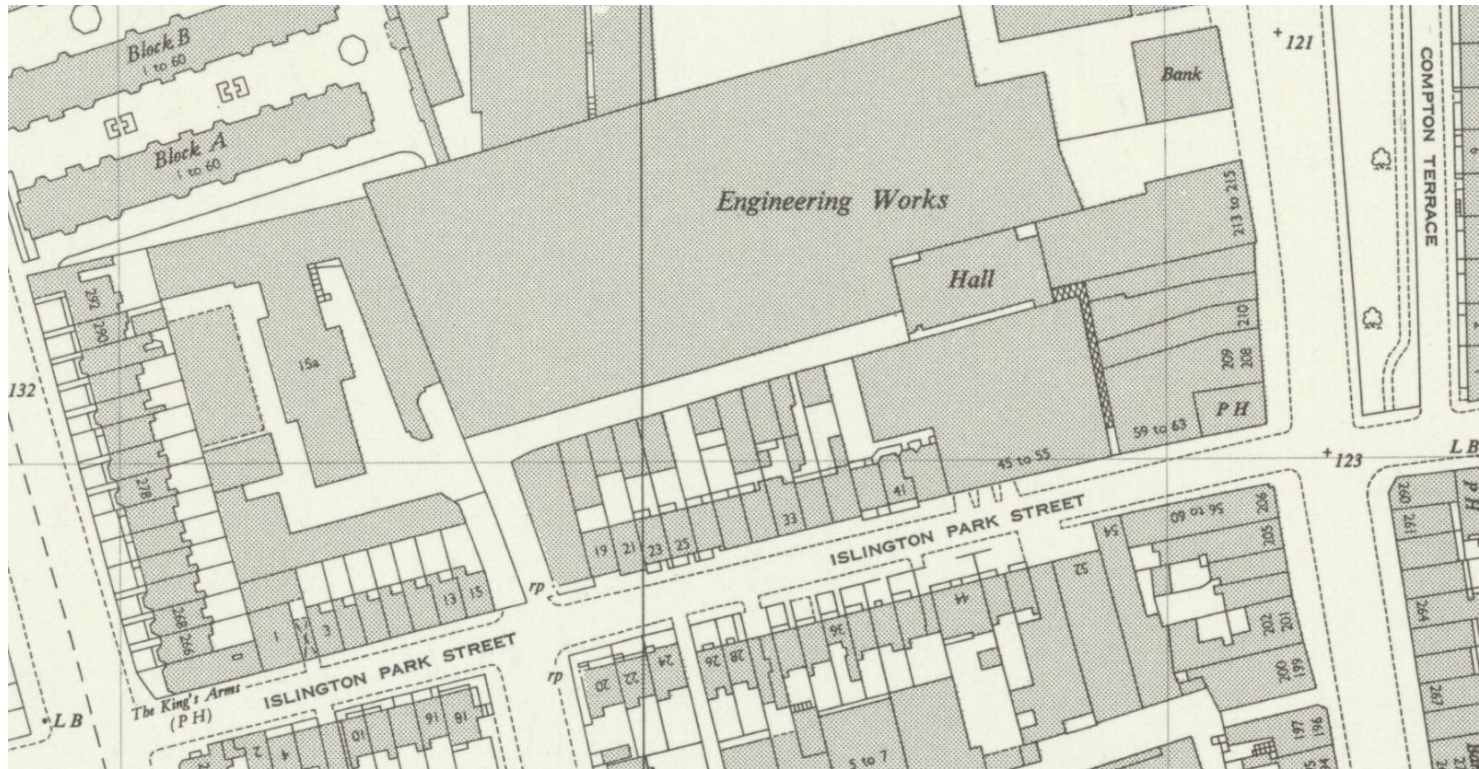


Fig 5. Map extract, revised in 1953 (ordnance Survey Office) and published 1955

By the date this map was surveyed the hall had been enlarged, the north wall had been moved out to the plot boundary and changes had been made to entrance hall. These changes were probably made in the 1930's/40's. Also, around this time the seating capacity was increased by the addition of an internal balcony around three of the walls (the west, north and east walls).

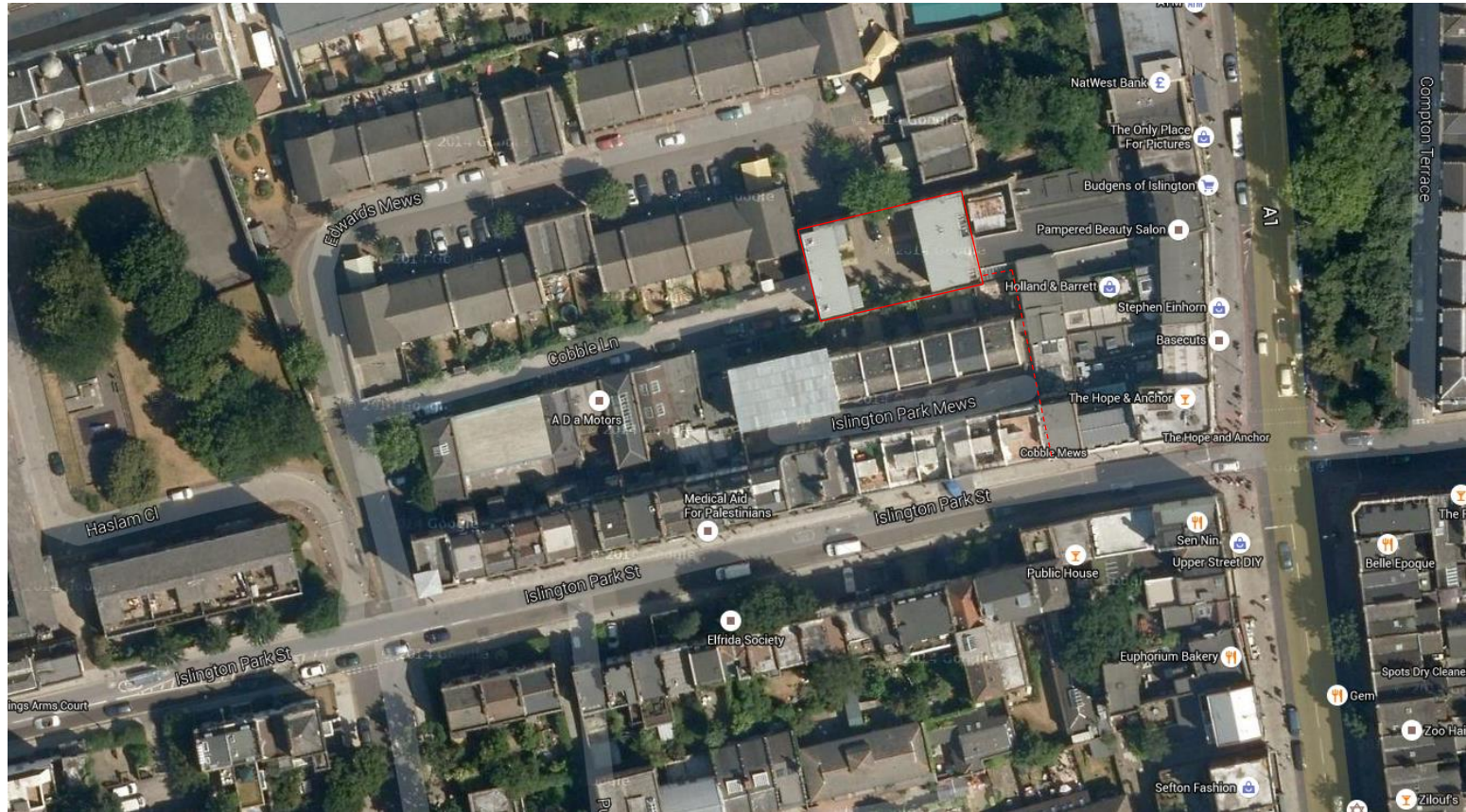
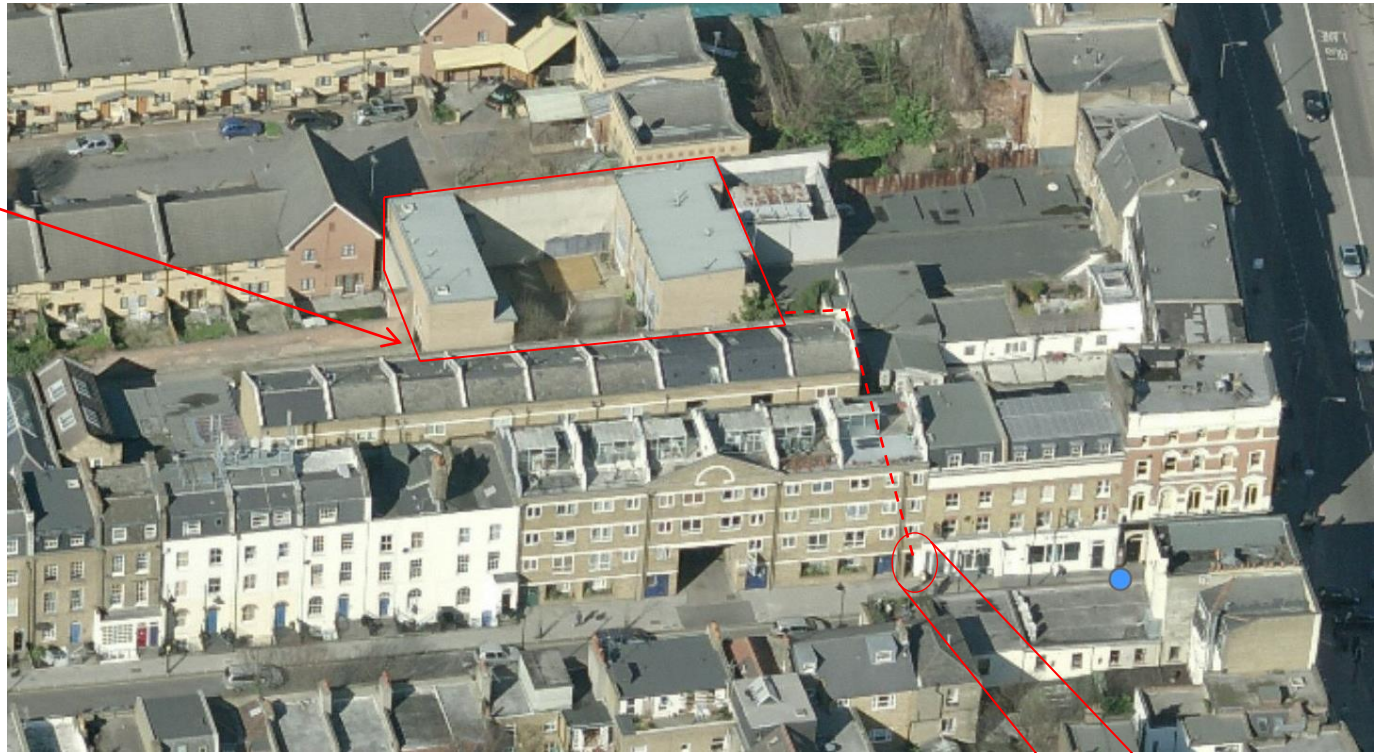


Fig 6. Satellite image, www.google.co.uk/maps 2015

By the late 1990's the hall was sold and housing built on the site.

Western end
entrance location



*Fig 7. Old hall site with entrances highlighted.
www.bing.com/maps 2015 (Looking North)*

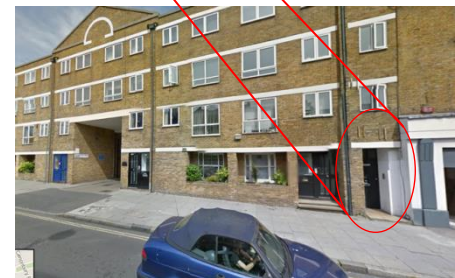




Fig 8. www.bing.com/maps 2015 (Looking South)

Old entrance corridor route (now an uncovered access path)